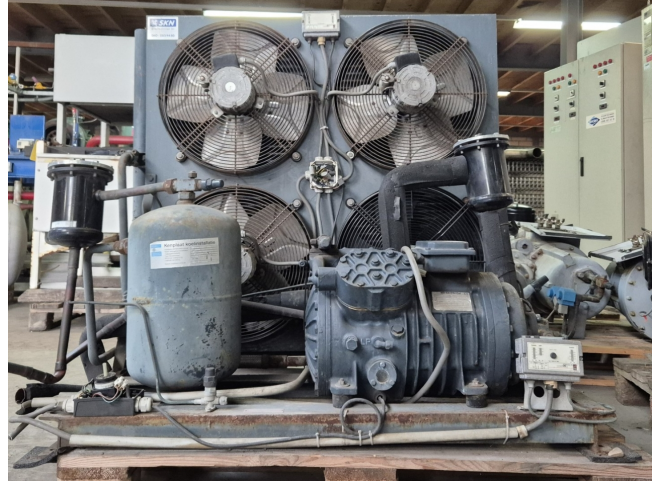


# Dorin K1000CC-02 Condensing unit

## Specifications

Marka	Dorin
Typ	K1000CC-02 Condensing unit
Czynnik chłodzący	Freon
kW at +10°C/+40°C	52,4
kW at 0°C/+40°C	36,6
kW at -5°C/+40°C	30,3
kW at -10°C/+40°C	24,8
kW at -20°C/+40°C	16,1
Podstawa na stalowej ramie	✓
Ciśnieniowe przełączniki bezpieczeństwa	✓
Obiornik cieczy	✓
Osuszający filter lini cieczy	✓
Okno widokowe	✓
m <sup>3</sup> / h	38,6
Condensing Unit	✓
Rozmiary	950x1300x1170 mm (LxWxH)
Stock	1



## Description

### Used Dorin K1000CC-02 Condensing unit

Used Dorin K1000CC-02 semi-hermetic reciprocating condensing unit on Freon. Complete with a condenser that has 4 fans - 50/60 Hz - 0,15 kW - 850 RPM - diameter 450 mm, liquid receiver, liquid line filter drier and pressure and safety switches. The compressor has a displacement of 38,6 m<sup>3</sup>/h.

\*Why choose for HOSBV? We are not only the largest used refrigeration specialist in Europe, but also, we deliver all equipment including an extensive test, warranty and an industrial cleaning. \*Optionally we can also perform a new paint job and arrange the logistics.

